

celduc® relais

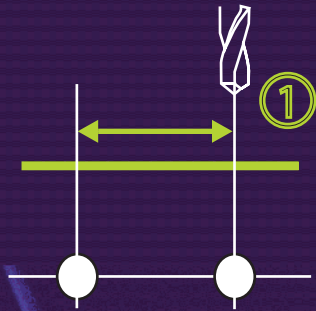


www.celduc.com

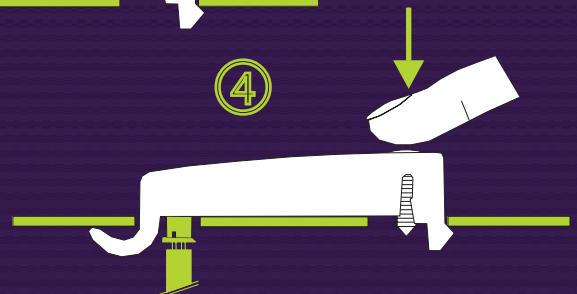
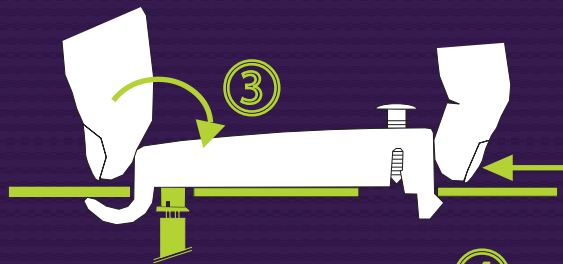


Magnetic proximity sensors

FOR WINDOW FRAMES



Save time for mounting & wiring!



PROUD TO SERVE YOU

Sensor for window frames with dry contact (Reed switch)

- Product developed to detect position of the window : open or closed (supervising of openings).
- Main applications : alarm, heating, air conditioning systems



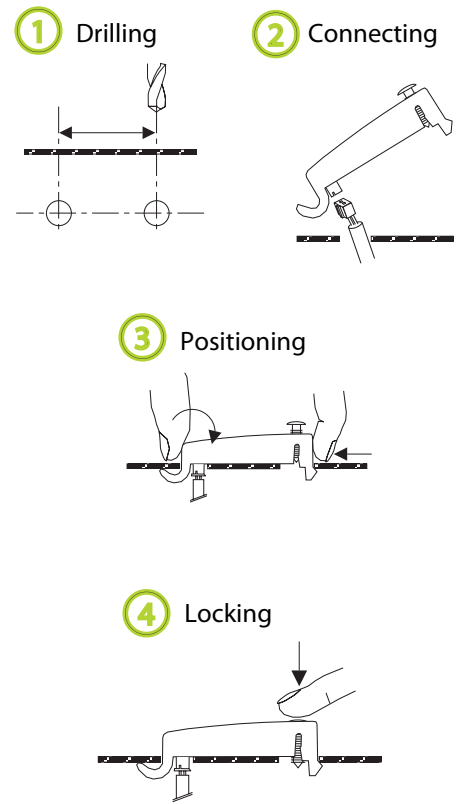
- Save time for mounting and wiring :
 - Pluggable connector
 - Product to be clipped (no fixing screws anymore)
- Normally open (NO), normally closed (NC), change-over contact, safety current loop
- Water-proof contact



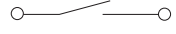
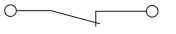

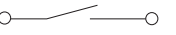
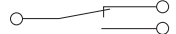
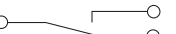
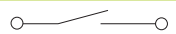



A solution for any type of frame material : aluminium, plastic or wood - for steel please consult us



Different cable lengths (3 - 5 and 10m)

Mounting & wiring times much shorter !



Product reference	Type of contact	Contact(s) status	
		 Window open	 Window closed
PWA01500	1 NO (contact is open if no magnet)		
PWB01500	1 NC (contact is closed if no magnet)		
PWC01500	1 change-over contact (1 NO contact + 1 NC contact)		
PWA11500	1 NO (contact is open if no magnet) + safety loop		
PWB11500	1 NC (contact is closed if no magnet) + safety loop		

All our technical data-sheets are available in our website www.celduc-relais.com